

**signos** A whole new species  
of diagnostic technology

The Signos® Personal Diagnostic Assistant is the world's smallest ultrasound device, answering the need for accurate, affordable, accessible diagnosis in the veterinary setting.

- High-resolution visualization of acute pathology
- Touch-screen display with text and voice annotation
- Stores up to 10,000 images
- Instant power on and long-lasting battery
- Comprehensive training and clinical support

**Reference 1** The Pet Owner's Guide to Veterinary Ultrasound. Available at: <http://www.vetinfo.com/guide-veterinary-ultrasound.html>. Accessed January 5, 2010.



|  |  |
|--|--|
| <p><b>Signostics, Inc.</b><br/>260 Sheridan Avenue, Suite 410<br/>Palo Alto, CA 94306<br/>USA<br/>1-650-327-4000<br/>1-877-5-SIGNOS (1-877-574-4667)</p> | <p><b>Signostics Limited</b><br/>Lot 1, 40-46 West Thebarton Rd<br/>Thebarton, SA 5031<br/>Australia<br/>+61 (8) 8152-9444<br/>1-800-SIGNOS (1-800-744667)</p> |
|--|--|

[www.signosticsmedical.com](http://www.signosticsmedical.com)

**Specifications**

|                   |  |
|-------------------|--|
| Weight            | <ul style="list-style-type: none"> <li>• 11.2 ounces (320 grams)</li> </ul>  |
| Dimensions        | <ul style="list-style-type: none"> <li>• Display unit: 4.5" H x 2.7" W x 0.8" D</li> <li>• Display screen: 2.7" hi-res color LCD</li> <li>• Probe: 6.3" L x 2" W x 0.9" D</li> <li>• Connecting cable: 33.5" L</li> </ul>                        |
| Transducers       | <ul style="list-style-type: none"> <li>• 3.5 MHz single crystal</li> <li>• 7.5 MHz single crystal</li> </ul>   |
| User interface    | <ul style="list-style-type: none"> <li>• Touch screen and scroll wheel</li> <li>• Onscreen alphanumeric keyboard</li> <li>• Text and voice annotation</li> <li>• Optional password protection</li> </ul>   |
| Measurement tools | <ul style="list-style-type: none"> <li>• 4 sets linear distance calipers</li> <li>• Ellipse &amp; polygon area/circumference</li> <li>• Volume measurement</li> <li>• M-mode time</li> <li>• Beats-per-minute (BPM)</li> </ul>                   |
| Image storage     | <ul style="list-style-type: none"> <li>• 2 GB microSD™ data card (included)</li> <li>• Urgent Mode internal memory</li> <li>• USB connection for downloads</li> </ul>  |
| Software          | <ul style="list-style-type: none"> <li>• SigViewer™ software (included)</li> <li>• Synchronizes images/data</li> <li>• Search and manage database</li> <li>• Automatic updates</li> </ul>  |
| Battery           | <ul style="list-style-type: none"> <li>• 100% charge in 3 hours<br/><i>(75% charge in 1.5 hours)</i></li> <li>• Lasts up to 12 hours<br/><i>(based on four 1-minute scans/hour)</i></li> <li>• Over 60 minutes of continuous scanning</li> </ul> |

©2010 Signostics, Inc. All rights reserved. D02820 Rev 1  
Signos and SigViewer are registered trademarks of Signostics Limited.



**signos**

Diagnosis on site - *on demand*

See more, do more, with the  
Signos® Personal Diagnostic Assistant



Now you can see what your patients can't say

### A revolution in how you see your patients

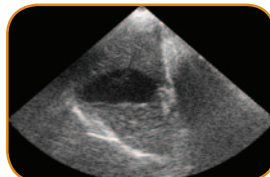
The Signos® Personal Diagnostic Assistant is the world's smallest and most affordable ultrasound system. This unique palm-sized device weighs just 11 ounces (320 grams) and is ideal for diagnosis at the point of care.

Signos makes ultrasound technology so easy to use that most clinicians learn to capture images in less than an hour—and it is small enough to carry in your pocket or wear like a stethoscope.

“Ultrasound is a safe, non-invasive tool allowing visualization of tissues not otherwise possible.”

### From ponies to parakeets

Signos can eliminate the need for costly outside imaging services and can be used in a wide range of species—including exotics. With it, you can perform E-FAST exams, pregnancy checks, lump analysis, cystocentesis, basic triage of the heart, and gross abdominal abnormalities.



Canine liver and gallbladder

### Unique design makes waves in your practice

Signos will become an invaluable tool for everyday use, offering features including volume measurements, customized patient data, voice annotation, and multiple transducer frequencies.



2 GB microSD™ data card (included) stores up to 10,000 images.



Easy-to-use twist-on 3.5 MHz or 7.5 MHz transducers increase the number of applications possible.

SigViewer™ software (included) automatically synchronizes for fast, easy uploading of data and images for reports, archiving, printing, or e-mail.

High-resolution touch screen facilitates a range of applications. Onscreen keyboard for fast, easy annotations.

### See more. Do more.

Signos offers a unique combination of affordability, adaptability, and accessibility that can help you save time, money—and pets' lives. Comprehensive training and clinical support are on hand to help you make the most of Signos to revolutionize the quality of care at the point of care.

Learn more about the Signos® Personal Diagnostic Assistant. Schedule a free online demonstration at [www.signosticsmedical.com](http://www.signosticsmedical.com).

