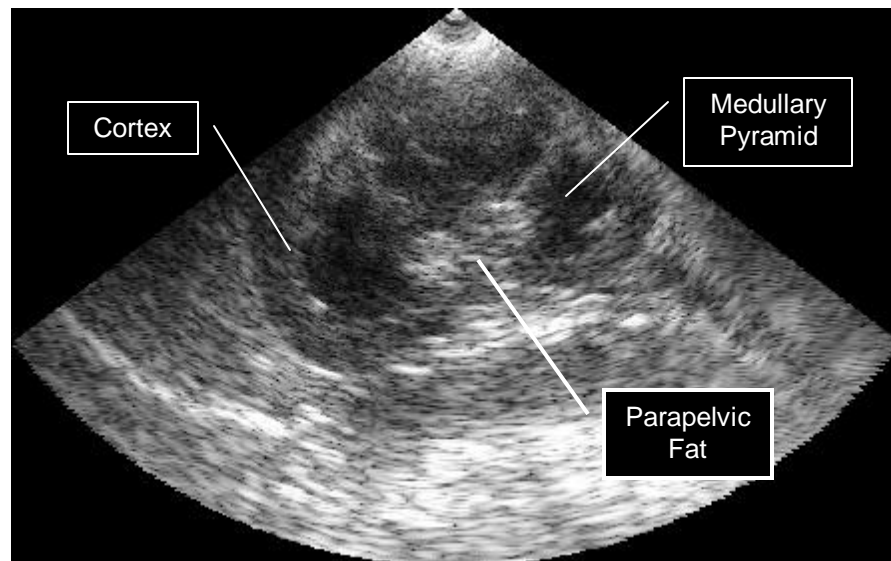


## VETERINARY APPLICATIONS TRAINING SERIES

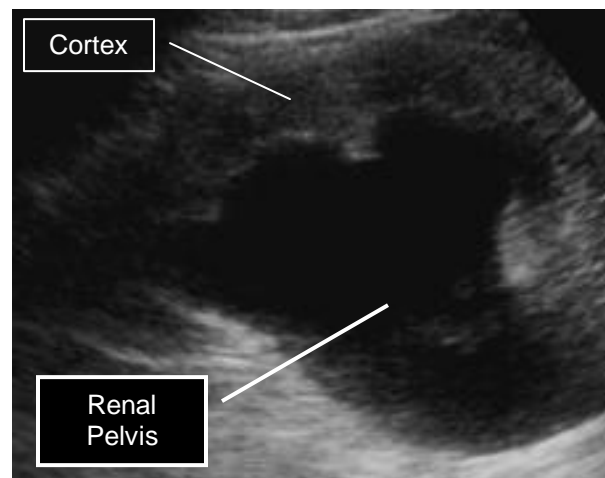
### ULTRASOUND ASSESSMENT OF RADIOLOGY DETECTED RENOMEGALY

When renal enlargement is suspected on radiology, Signos has a valuable role in determining the nature of the enlargement. A quick look scan can differentiate between benign renomegaly, obstruction and tumour.

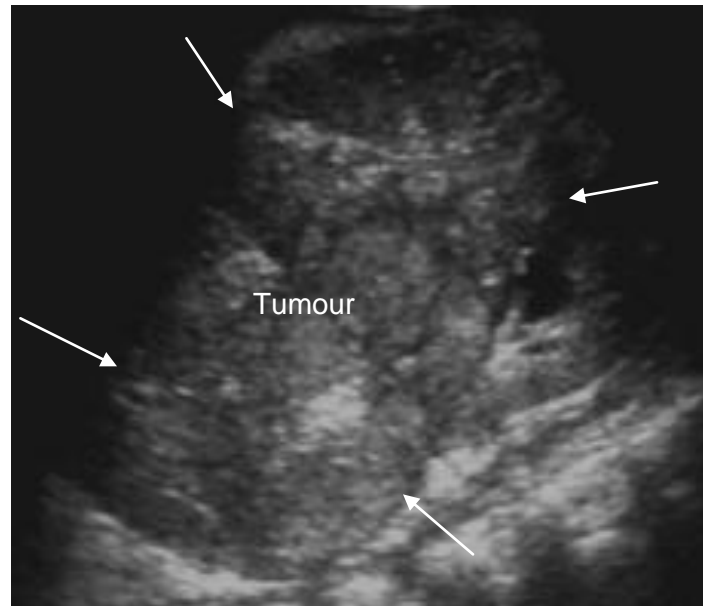
#### Normal appearance of the kidney



**Renal Obstruction** - When a hydronephrosis (Pyelectasis) is present, fluid-distension of the renal pelvis and calyces will be seen as shown in the image below. Assess the thickness of the surrounding cortex. When obstruction is long-standing you will see cortical atrophy (thinning).



**Renal Tumour** - Infiltration of a kidney by tumour is another cause of renal enlargement. Renal tumours are often large at the time of diagnosis, as so much of the renal anatomy is often replaced by the large heterogeneous (patchy-textured) mass.



View a video clip demonstrating this clinical application at [www.signosticsmedical.com](http://www.signosticsmedical.com).

**DISCLAIMER**

This information is intended for educational purposes and to provide instruction in the operation of your Signostics ultrasound device. The techniques and procedures described should only be performed by a qualified clinician. The applicability of these techniques and procedures should be independently verified. Use of the information contained in this document is at your own risk.