

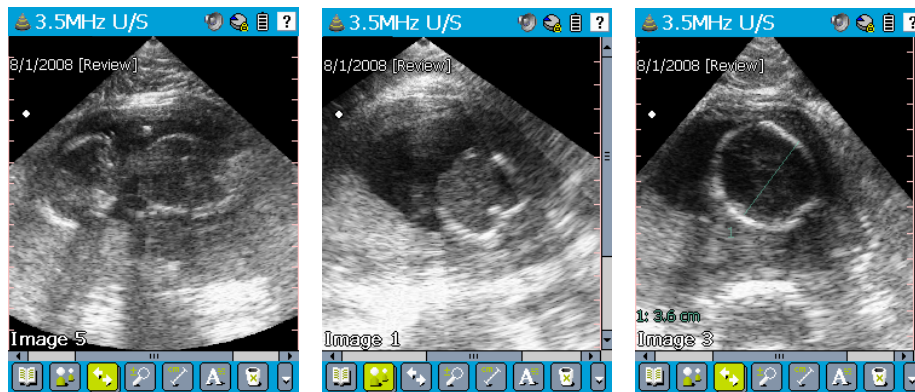
VETERINARY APPLICATIONS TRAINING SERIES

INTRODUCTION TO BASIC PREGNANCY ASSESSMENT

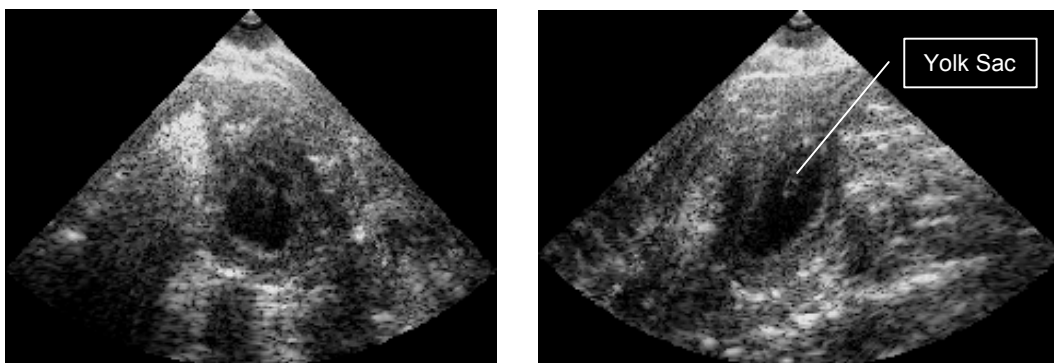
Signos provides a simple tool for the assessment of pregnancy.

Procedure Outline

1. Start by scanning animals that are obviously pregnant i.e. mammary changes and palpable uterine horns.



2. You could describe this as a 'binary diagnostic' examination because primarily you are just answering a Yes / No question. "Are pregnancy sacs identified?" Absolute counts of fetal number can be difficult but if multiple pregnancy sacs are readily identified in both uterine horns then you could suggest that it is probably a **larger litter**. Alternately, if only a few pregnancy sacs are seen after a lot of looking then you could suggest that it is likely to be a **smaller litter**.
3. After a bit of practice you will begin to be able to identify early pregnancy sacs before other signs of pregnancy are obvious. The images below are pregnancy sacs seen in a Boxer at 3.5 weeks of pregnancy.



View a video clip demonstrating this clinical application at www.signosticsmedical.com.

DISCLAIMER

This information is intended for educational purposes and to provide instruction in the operation of your Signostics ultrasound device. The techniques and procedures described should only be performed by a qualified clinician. The applicability of these techniques and procedures should be independently verified. Use of the information contained within this document is at your own risk.